

# Environmental Justice (EJ) in Maryland

Noble Smith MDE ARA EJ coordinator



# MDE's EJ priority

Environmental Justice is one of Secretary McIlwain's top priorities

Secretary McIlwain completed a series of listening sessions in overburdened communities in 2023

Secretary McIlwain will be continuing to visit overburdened communities around the state in 2024

Expanding MDE EJ staff

Governor Moore directed MDE to "leave no one behind"



Secretary Serena McIlwain with Turner's Station community leadership.



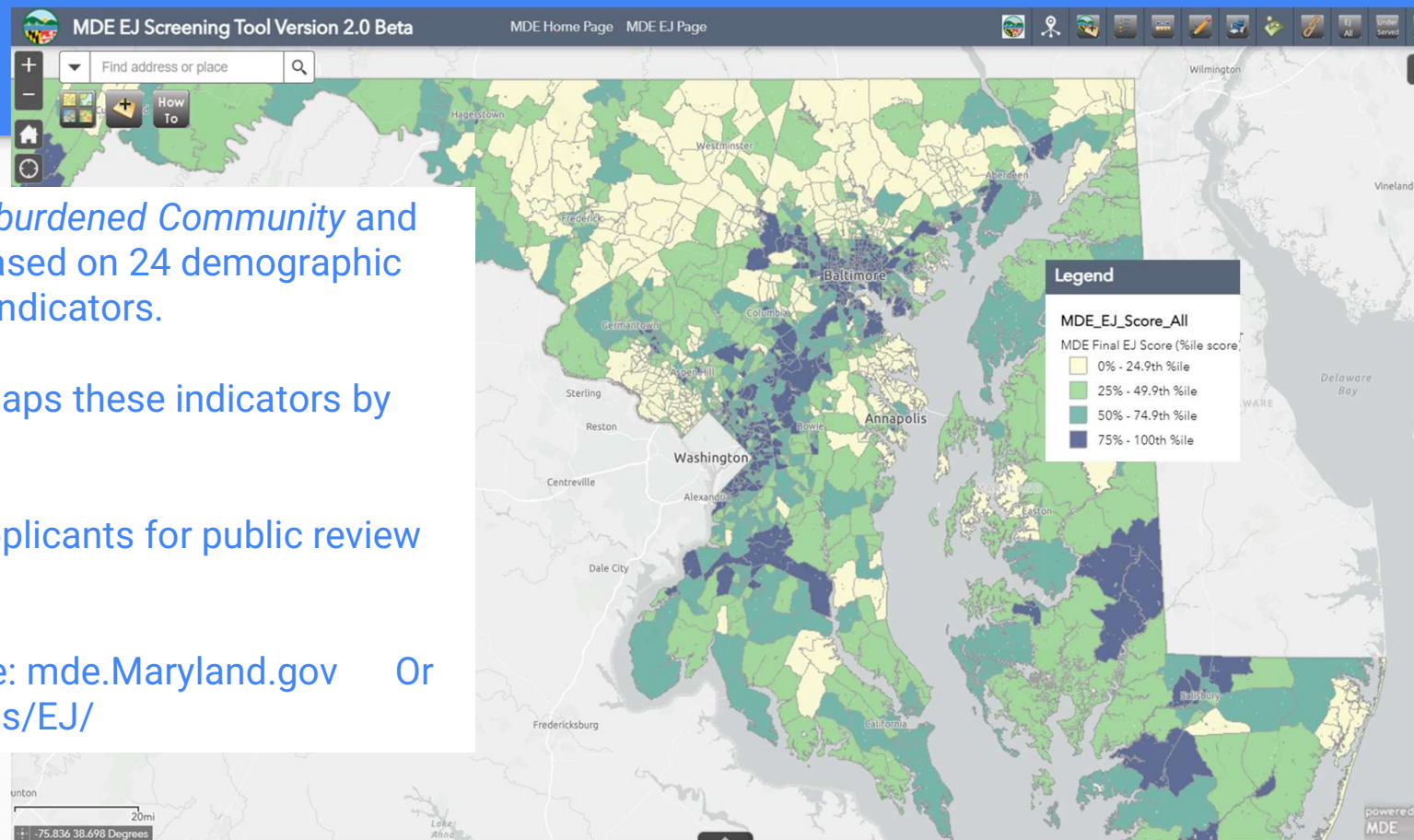
# Identifying Overburdened and Underserved Communities Through MDE's EJ Screening Tool

Maryland law defines *Overburdened Community* and *Underserved Community* based on 24 demographic and environmental health indicators.

MDE's EJ screening tool maps these indicators by census tract.

Required tool for permit applicants for public review permits under *HB 1200*.

Available on mde's website: [mde.Maryland.gov](http://mde.Maryland.gov) Or [mdewin64.mde.state.md.us/EJ/](http://mdewin64.mde.state.md.us/EJ/)



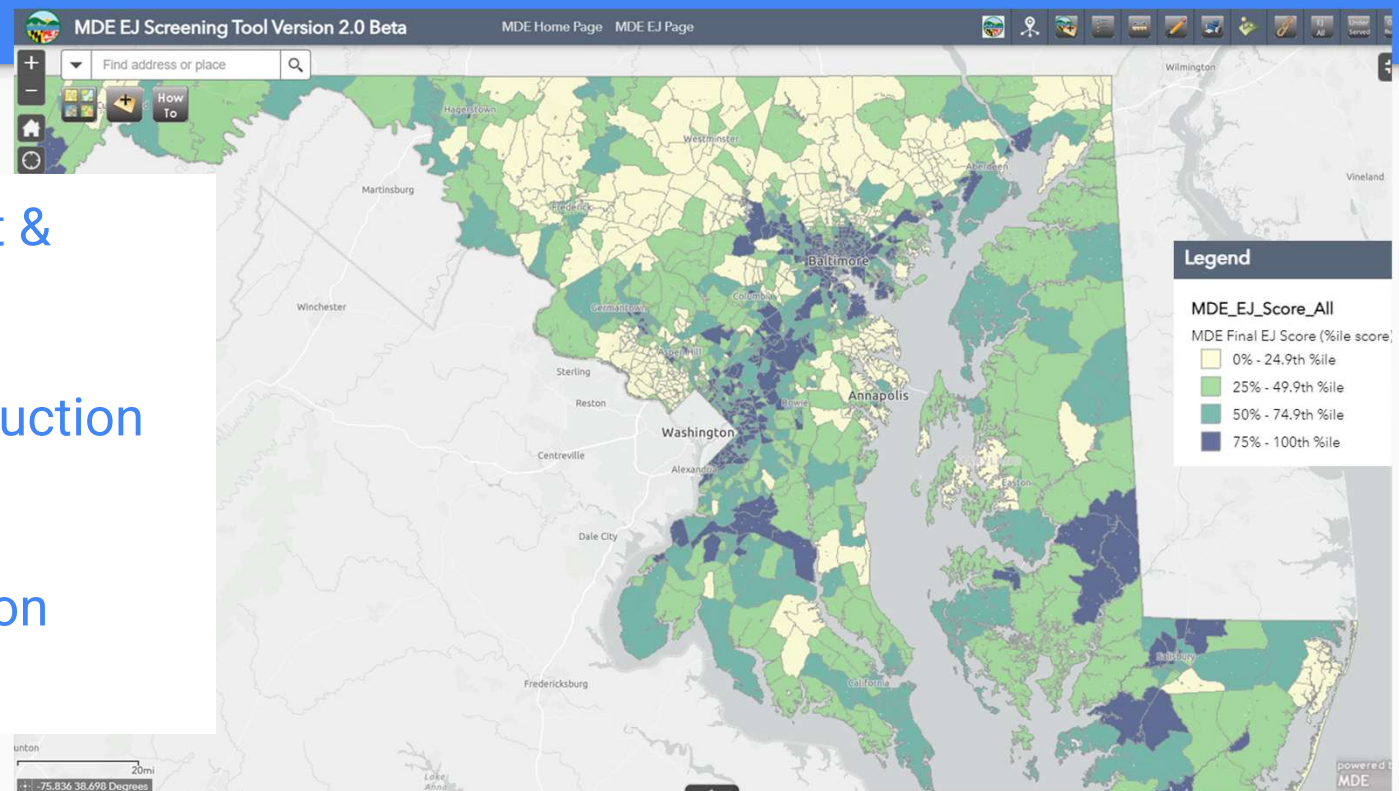


# Developing Community Partnerships

Targeted enforcement & inspection initiatives

Targeted pollution reduction programs

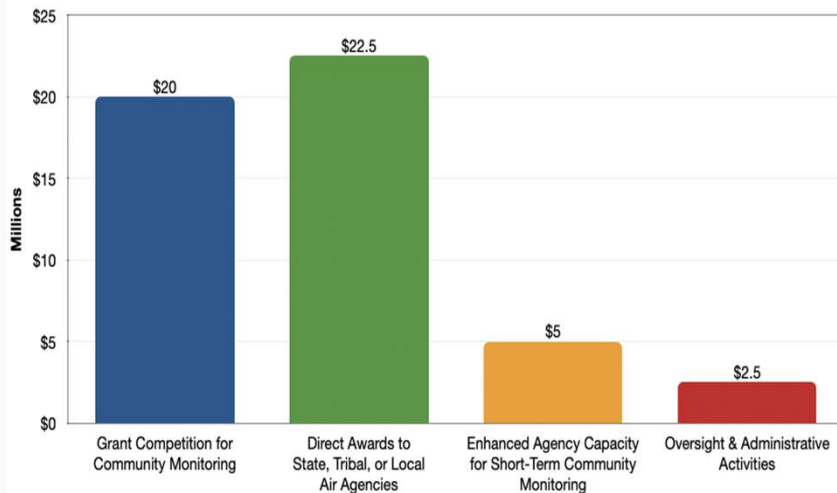
Greater collaboration on permit processes





# Federal American Rescue Plan (ARP) Grant

ARP Funding for Enhanced Air Quality Monitoring



In 2021, EPA announced the availability of \$50 million in funding to improve ambient air quality monitoring for communities.

The ARP grant focuses resources on monitoring specific community identified pollutants.

The grant runs until June 2025 with periodic monitor maintenance.

In 2023 MDE was awarded \$500,000 in grant funding.



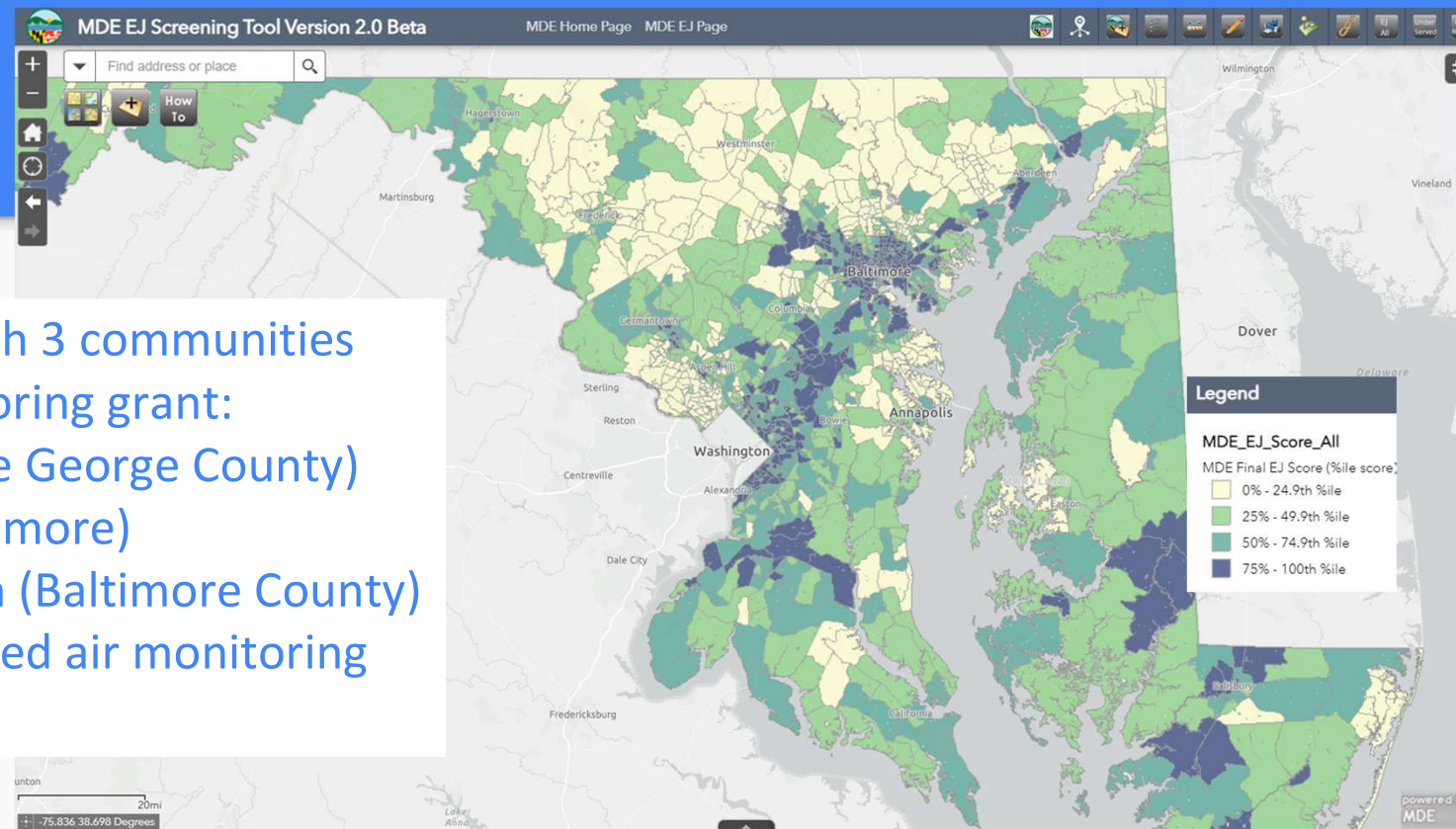


# Community Air Monitoring Under the ARP Grant

MDE is partnering with 3 communities under the ARP monitoring grant:

- Cheverly (Prince George County)
- Curtis Bay (Baltimore)
- Turner's Station (Baltimore County)

Community-determined air monitoring plans & equipment.





# Monitoring Parameters and Network Expansion Under ARP Grant

MDE worked with our community partners in Cheverly, Turner Station, and Curtis Bay to identify pollutants of concern and their sources

Community scientists identified pollutant sources such as coal dust and diesel truck traffic

Each community partner will receive a sensor package that will monitor the following pollutants:

Black Carbon, carbon monoxide (CO), nitric oxide (NO), nitrogen dioxide (NO<sub>2</sub>), ozone (O<sub>3</sub>), pm (PM<sub>1.0</sub>, PM<sub>2.5</sub>, PM<sub>10</sub>), total volatile organic compounds (TVOC)





# Air Monitoring Focus: Curtis Bay

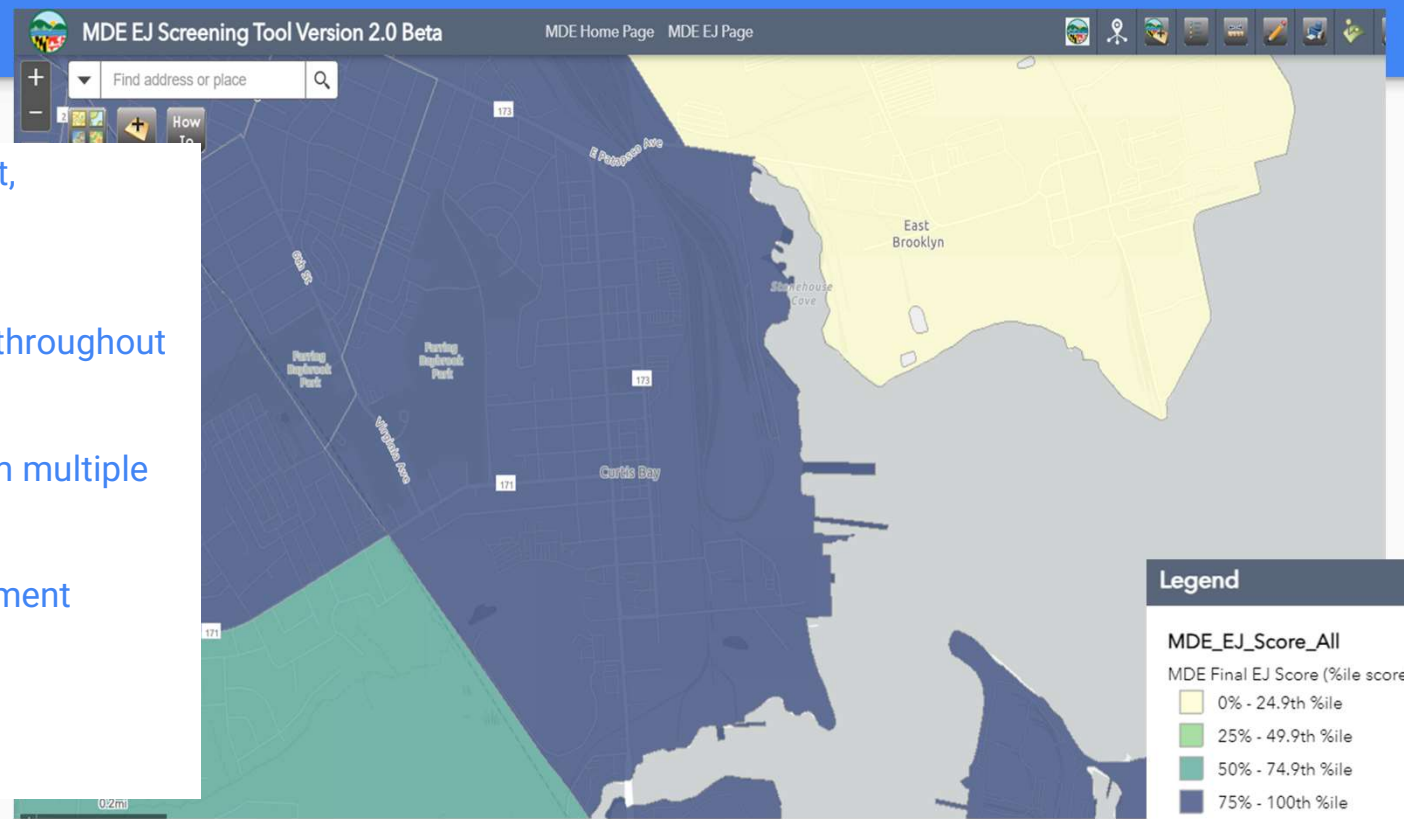
Community-led air monitoring project,  
partnership with JHU, UMD,  
MDE scientists.

Measurement of multiple pollutants throughout  
the neighborhood.

Detailed analysis of contribution from multiple  
sources.

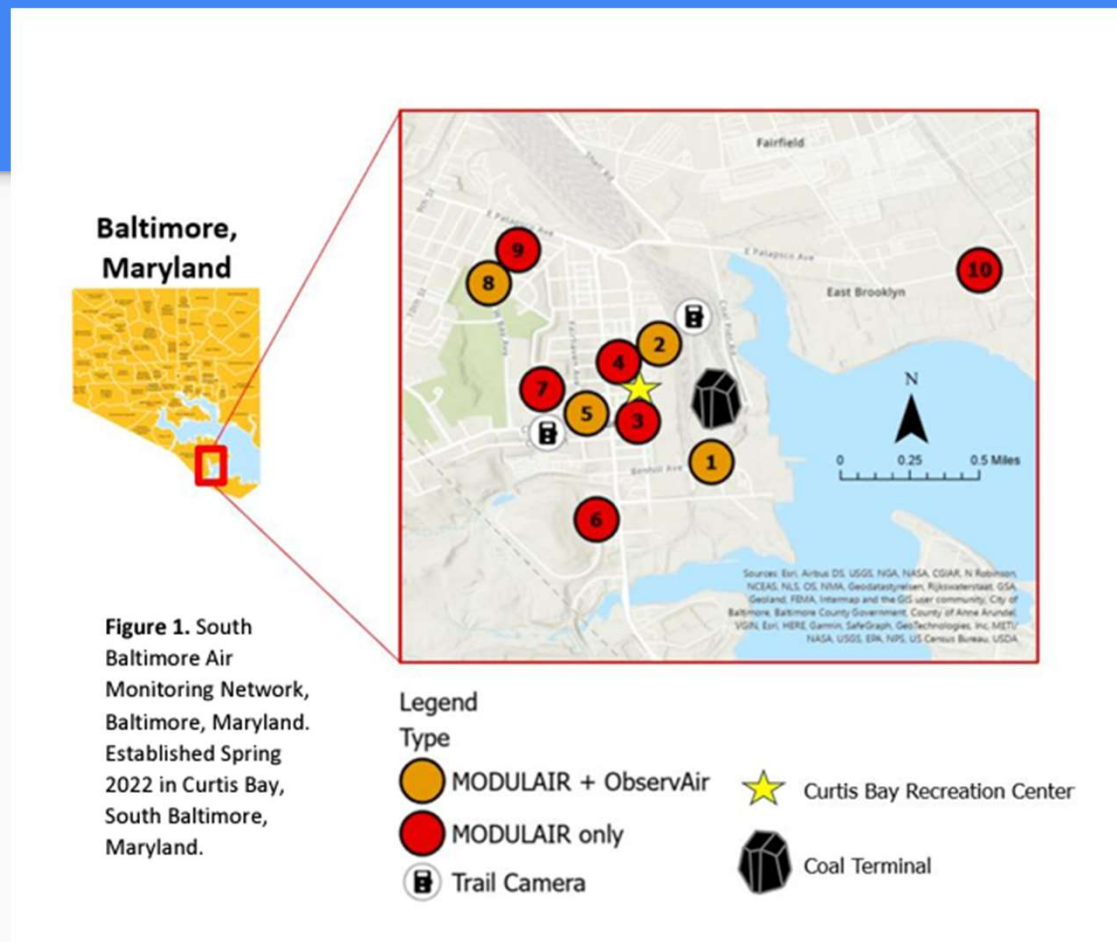
MDE supports the partnership equipment  
calibration/colocation, data analysis,  
interpretation.

Results informing permit processes.





# Existing Curtis Bay Sensor Network



# Community Air Monitoring Report

## Key Findings:

1. Coal dust is present throughout the community. a. Coal particles were identified at all 8 community sampling locations and in 100% of samples during 3 different rounds of sampling (Aug, Sept, & Oct 2023),
2. Coal dust finds its way into the community on a day-to-day basis and is correlated with both activity at the coal terminal and wind direction.
3. The Curtis Bay community is overburdened by air pollution, with the community sensor network measuring average particle pollution levels that are higher than at nearby MDE regulatory monitors.

## MDE Follow up actions

- Integrating the report into permits in Curtis Bay
- Increasing inspections and enforcement actions
- Expanding the hyperlocal air quality monitoring network



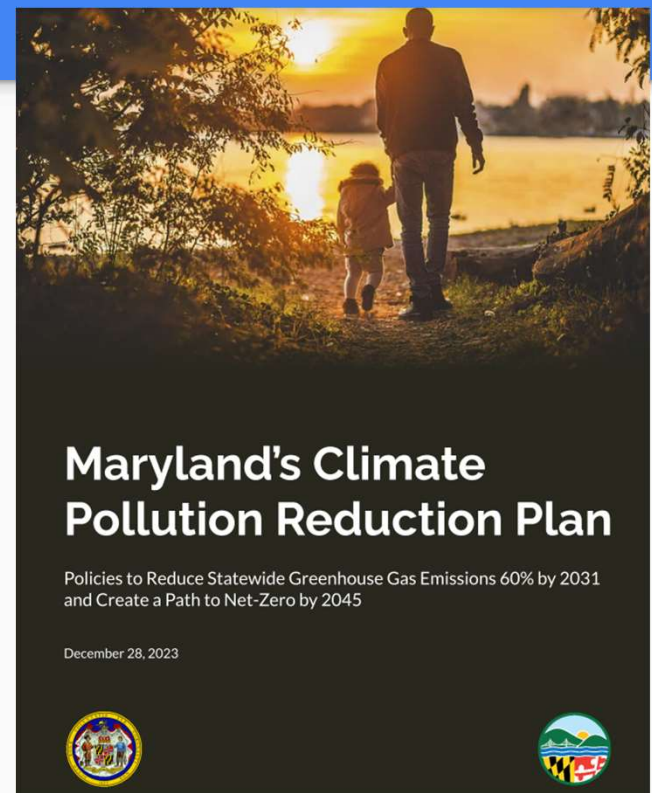
# Climate Change and Climate Justice

Maryland's ambitious climate change goals

- 60% GHG reduction by 2031
- Net-zero by 2045.

Established by the Climate Solutions Now Act, which also established EJ & Climate Justice frameworks, including community definitions.

Maryland's approach: **We will achieve our climate goals by investing in Marylanders and leaving no one behind. Air quality and public health outcomes will improve for everyone, especially people living in historically underserved and overburdened communities.**





# Partnership Opportunities

## Build Environmental Justice Capacity in Overburdened/Underserved communities

- Partner with EJ community groups on grant opportunities
- Develop community science trainings and other resources for community engagement

## Organize around Environmental Justice

- Create/Host forums for developing EJ resources
- Tree plantings or other air quality infrastructure projects are great community initiatives
- Environmental Justice Education Workshop

## Share Resource on Environmental Justice Priorities

- Attending community meetings in Environmental Justice neighborhoods
- Drive investment in Environmental Justice Communities

# Thanks!

Contact us:

Noble Smith  
Environmental Justice  
Coordinator  
[noble.smith1@maryland.gov](mailto:noble.smith1@maryland.gov)

